



# Eden Public School

DARE TO DREAM & ACT TO ACHIEVE  
160 YEARS OF EDUCATION  
1857 TO 2017

Respect  
Responsibility  
Resilience



Education &  
Communities

NEWSLETTER-Term 4, Week 9 Tuesday, 5<sup>th</sup> December 2017

## Diary Dates

### December

- Fri 8<sup>th</sup> School reports  
Whole school assembly  
1pm
- Tues 12<sup>th</sup> Stage 2 / 3  
Celebration day
- Wed 13<sup>th</sup> School  
Presentation (Eden  
Marine High School  
11.00am)
- Thurs 14<sup>th</sup> K-2  
Performance 10am  
school hall
- Fri 15<sup>th</sup> Last day of  
Term 4

## Principal's Report



### School Presentation Day

Our annual presentation day will be held at;

**Eden Marine High School  
Wednesday, 13<sup>th</sup> of December, 2017.  
11am**

All students are to attend this significant event and must be in full school uniform. All parents and caregivers are welcome to attend.

### School Reports

Student reports are due to go home at the end of this week. Please make sure you ask your child for their report on Friday. Parents who wish to discuss the end of year report with the child's teacher can call the school office to make an appointment with the class teacher.

### School Communication Sign

Please take the time to read our messages on our new school communication board. We are very proud to lead the way in delivering school messages to the whole Eden Community.

### End of year Activities

As we are quickly approaching the end of the year and the students become involved in a variety of different end of the year activities; swimming, movies, class parties, luncheons, performances, etc, it is of utmost importance that students remember to use their school values.

## Respect Responsibility Resilience

Have a wonderful week,  
Tanja Vogt  
Principal

[Eden-p.school@det.nsw.edu.au](mailto:Eden-p.school@det.nsw.edu.au)  
[www.eden-p.school.nsw.edu.au](http://www.eden-p.school.nsw.edu.au)

## Joke Corner

**Q:** What do snowmen like to do on the weekend?



**A:** Chill out!





## Mathletics News Week 9

**Congratulations Eden Public!!!** Last week we had **4 students** achieve a **Silver Certificate** and **17 students** earned a **Bronze Certificate**. **Well done everyone!** Remember to get a Silver certificate you must get four Bronze certificates. Bronze certificates are earned by **getting 1000 points in a week** (Monday morning to Sunday night), about 5-10 activities in total. Just check the rocket ship to see your weekly progress.

Congratulations also goes **4C** to who were last week's leading class with **8 certificates**. Second place goes **1C** (4), with equal third to **3K** (3) and **3/4E** (3). Just remember students have full 24hr access to Mathletics on the Internet.

Simon Taylor



## This week's PBL winners



## Elective Sport Program 2017

This Friday, students in Stage 2 and 3 will be participating in their final elective sports activity. I would like to thank the students for their level of participation, and the teachers for providing the opportunities for these activities to occur. Finally, I would also like to thank our dance instructor Angela, David Sherlock of the Eden Country Club and the Eden Cricket Club and the Eden Tennis Club for the use of their facilities and instruction during our elective sport program.

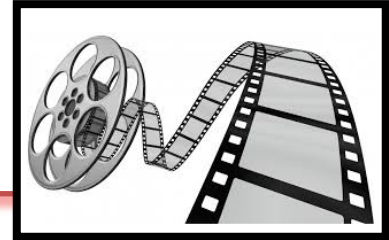




## STAGE 2 AND 3 CELEBRATION DAY

To commemorate the end of a very successful year, all students in Stage 2 and Stage 3 are invited to **The Picture Showman, Merimbula**, to view "Ferdinand" (rated PG) on Tuesday **December 12<sup>th</sup>**. Students are reminded to return their permission note and money **due this Friday**.

Simon Taylor



## P&C NEWS

Reminder could all donations for the hampers please be dropped off to school by lunchtime Thursday. All sold tickets and money is to be returned on Thursday also.

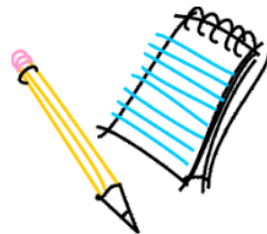
Thank you P&C



## Wednesday Raffle Roster

### Wednesday Raffle Week 9

- KC Lauren Woods
- KP Jess Munday
- 1C Robin Bawden
- 1D Megan Jeffs
- 2U Alisha Wilkinson
- 2B Julie Boller
- 3K Jill Francis
- 3/4E 3/4M Tasha Best
- 4C Zoe Heffernan
- 5/6H Lisa Pollock
- 5/6L Liz Priestley
- 5/6E Melina Caldwell



[Eden-p.school@det.nsw.edu.au](mailto:Eden-p.school@det.nsw.edu.au)  
[www.eden-p.school.nsw.edu.au](http://www.eden-p.school.nsw.edu.au)

### Wednesday Raffle Week 10

- KC
- KP
- 1C
- 1D
- 2U
- 2B
- 3K
- 3/
- 5/
- 5/6L
- 5/6E

**P&C WILL DO THIS WEEKS RAFFLE  
MERRY CHRISTMAS**





## COMMUNITY NEWS

**MERIMBULA - Twyford Hall**  
**EDEN - Uniting Church Hall**  
**BEGA - Bega Showgrounds**

**12 ~ 3pm Christmas Day**  
**Hot Lunch Provided**  
**All Are Welcome**

*Bookings appreciated*  
*Please call Janita Fernando*  
**0427 298 432**

**Sapphire Coast Community**  
**Christmas Lunch**

**“Because no one eats alone on Christmas day”**



**CAMPBELL PAGE**

Wednesday 6<sup>th</sup> Dec 2017 1130am

**EDEN BREAKING THE  
 SILENCE TO SAY NO  
 TO DOMESTIC  
 VIOLENCE**

Come take a stand as ONE as we walk together to SAY NO to DOMESTIC VIOLENCE... We invite you all to partake in a walk commencing 1130am Eden Pines Station down the main street to Campbell Page Hub... Followed by Guest Speakers Information Stall and FREE Sausage Sizzles

For Further Information Contact:  
 Kuh Cruise 0476831385 or  
 Timika Mitchellin 0490424916



For 24/7 Assistance and Support with DV Call DV Hotline 1800656463

